

MONTHLY MEMBERSHIP PROGRESS REPORT

LOCATION NEW YORK

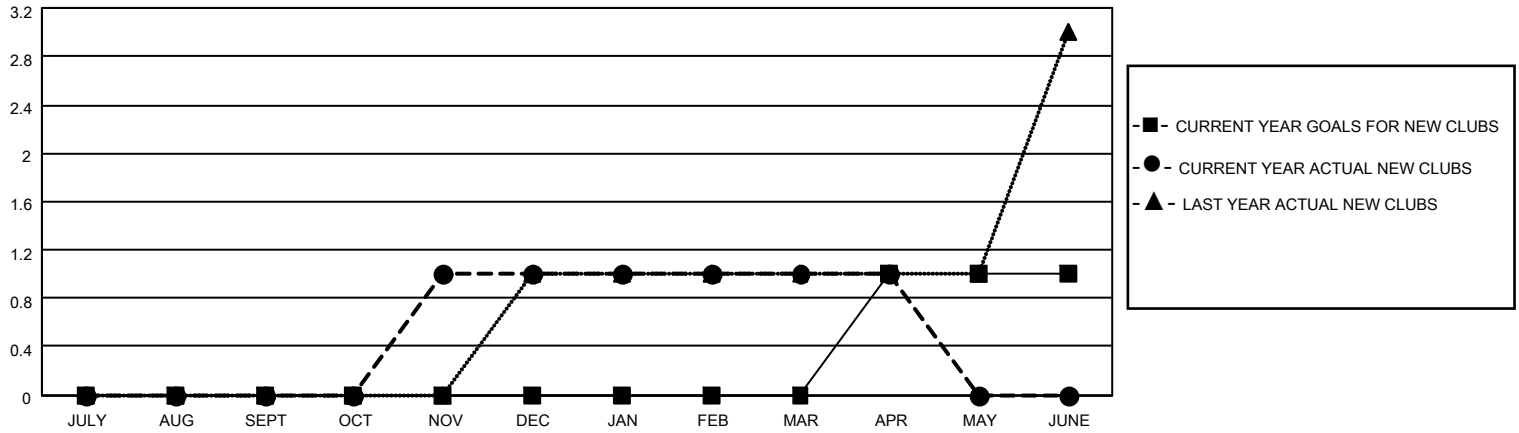
District 20 K2

Results as of: 4/30/2023

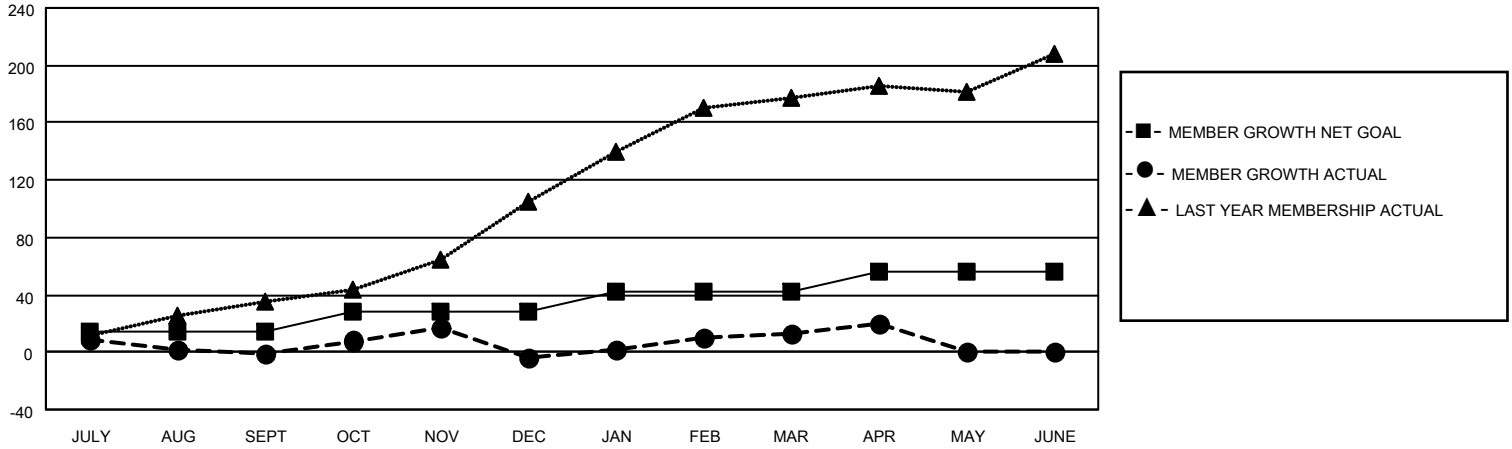
Clubs			
RESULTS FOR 2022-2023			
QUARTER	NEW CLUB GOAL	NEW CLUBS	DROPPED CLUBS
JULY/AUG/SEPT	0	0	1
OCT/NOV/DEC	0	1	0
JAN/FEB/MAR	0	0	0
APR/MAY/JUNE	1	0	0

Members			
RESULTS FOR 2022-2023			
QUARTER	MEMBER GROWTH NET GOAL	MEMBER GROWTH ACTUAL	DROPPED MEMBERS ACTUAL (including transfers)
JULY/AUG/SEPT	14	29	30
OCT/NOV/DEC	14	61	59
JAN/FEB/MAR	14	26	9
APR/MAY/JUNE	14	10	2

GOALS AND ACTUAL NEW CLUBS CUMULATIVE



GOALS AND ACTUAL MEMBERS CUMULATIVE



DROPPED CLUBS: 1

22 CLUBS OF 39 ADDED 1 OR MORE NEW MEMBERS

GENDER DISTRIBUTION

DROPPED MEMBERS

DECEASED	9
CLUB CANCELLED	1
OTHER	90
TOTAL	100

[CLICK HERE FOR CUMULATIVE MEMBERSHIP DATA](#)

MALE	792 (58.71%)
FEMALE	555 (41.14%)
NON BINARY	0 (0.00%)
PREFER NOT TO ANSWER	2 (0.15%)

TOTAL FAMILY UNIT MEMBERS 198

FAMILY MEMBERS PAYING HALF DUES 105